

# Need more **help?**

[amcrest.com/support](https://amcrest.com/support)

Get the most out of your Amcrest product. Check out our FAQs, instructional videos and support page.



[facebook.com/amcrest](https://facebook.com/amcrest)



[twitter.com/amcrestsecurity](https://twitter.com/amcrestsecurity)

1.888.212.7538

[support@amcrest.com](mailto:support@amcrest.com)

© 2018 Amcrest Industries.  
All rights reserved.

# How to Access Your Web UI Using Google Chrome

Amcrest Web View




**AMCREST**

Simple. Reliable. Secure.



To view your Amcrest device using Google Chrome you will need to have access the Amcrest Web View App. This is accessible via the chrome web store.

For a more comprehensive overview on how to access your web UI using Google Chrome please follow this simple step by step instruction provided below.

 **NOTE** The Amcrest Web View application is **only** for use with Google Chrome and is not compatible with any other web browsers.

## 1 Download Software

Download the Amcrest IP Config tool to locate your device's IP address. To download and install the Amcrest IP Config tool, please visit

 <https://support.amcrest.com/hc/en-us/articles/360004527171-IP-Config>

Once downloaded, locate the IP address associated with your device in the IP field of the IP config software.



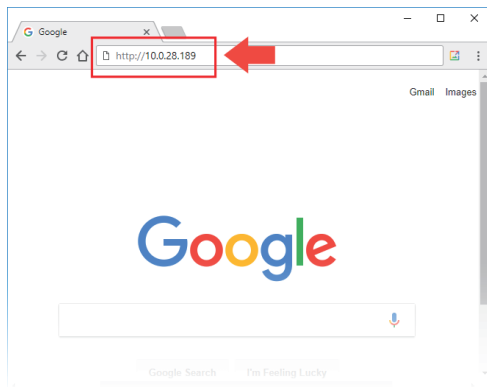
No.	Type	Model	IP
1	IPC	IP2M-841EB	10.1.1.65
2	IPC	IP2M-841B	10.0.27.213
3	IPC	IP2M-841B	10.0.31.152
4	IPC	IP2M-841B	10.0.31.194
5	IPC	IP2M-841EB	10.0.16.67
6	IPC	IP2M-841B	10.0.28.189
7	IPC	IP2M-841B	10.0.1.104

## 2 Open Chrome

Open Google Chrome on your computer and enter the IP address


 <http://10.0.28.189>

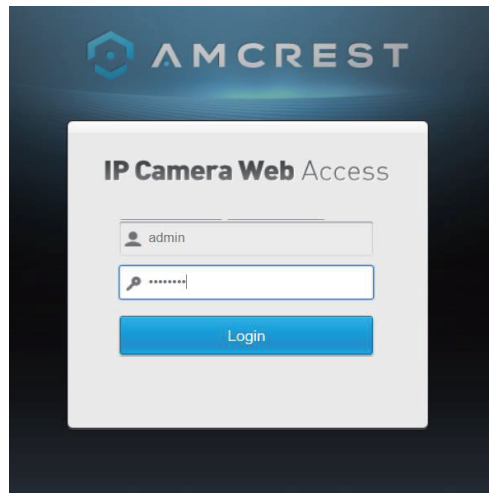
for your device into the web browser.



## 3 Log-in

Log in with the username and password associated with your device.

 **NOTE** If this is your first-time logging into your device, your username and password will be **admin**

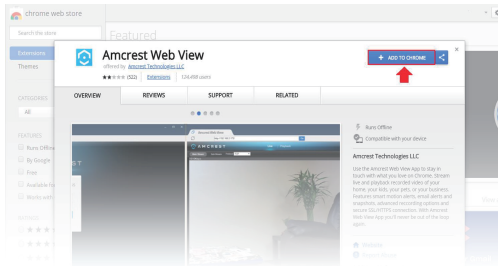


When you have successfully logged into the web UI for your camera, you will be prompted to download the necessary plugin for your device. Click this prompt to begin the installation.

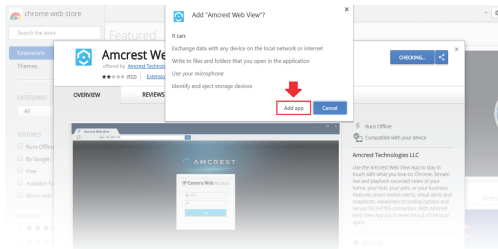


## 4 Add to Chrome

When this option is selected, you will be automatically directed to the chrome web store and the “Amcrest Web View” application will appear. Click on **“Add To Chrome”** to add the application into Chrome.

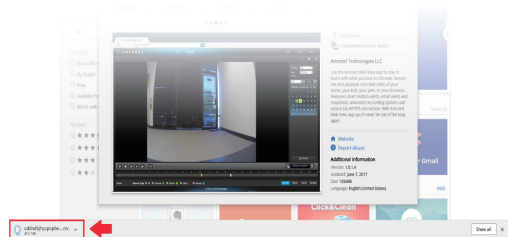


Next, you will see a prompt which briefly highlights the capabilities and function of the app. To complete the installation, click on **“Add app”** to add the app to Chrome.



## 5 Download plugin

Once this is selected the browser will begin checking the application. You will also notice the application starting to download. Allow the application to finish downloading.



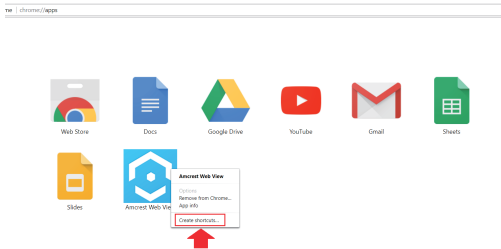
When the application has finished downloading, the browser will automatically direct you to

 <chrome://apps/>

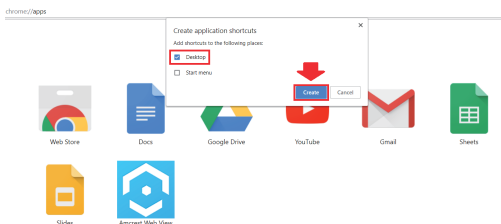
which is the app launcher for your browser. In the app launcher you will notice the “Amcrest Web View” app has appeared indicating a successfully download.

## 6 Create shortcuts app

Next, for quick access to your Amcrest web viewer, left click on the Amcrest Web View icon and click on **“Create shortcuts”** to create a shortcut for the application.



You can select a multiple of shortcuts to be added however, in this example, let's set the indicated shortcut to our desktop. Click the checkbox for **“Desktop”** and then **“Create”** to create the shortcut.



# Congratulations, you did it!

At this point the Amcrest Web View application is set to your desktop.

